

POSITIONING CONCEPTS

Article edited by Alan Kibbler from the Asian Football Confederation Policy prepared by AFC's Director of Referees, Gary Power
July 2005

Positioning concepts are tools, not rules!

Positioning is not static. It is determined by the ebb and flow of the game. Therefore, there is no such thing as a single position that is perfect every time. It varies as the game changes. The chosen position can be evaluated in terms of whether it assisted the referee to get the decision correct.

**Good positioning is the place with the best view,
close enough to react effectively.**

Good positioning can be recognised from the implementation of its three components: **Angle, Ball, and Close**

This is the **ABC of Positioning**.

This basic, simple tool is ideal in helping referees understand the dynamics of good positioning. As they master each component they add the next component [like another Lego blocks] to the model they have already learned, each time adding to their knowledge and skills needed to master the techniques of good positioning. The positioning sequence is:

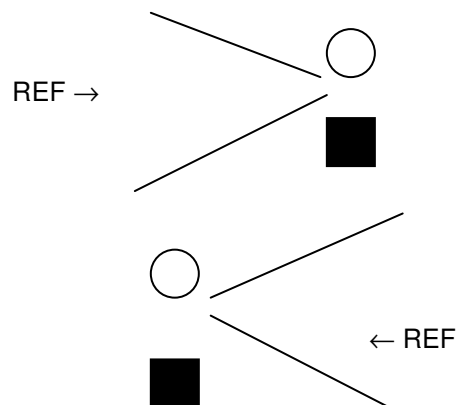
1. **ABC**
2. **ABC + diagonal**
3. **ABC + diagonal + WWG**
4. **ABC + diagonal + WWG + targets**
5. **ABC + diagonal + WWG + targets + X Factor**

ELEMENT 1: ABC

ANGLE

The first priority for a referee is to see what has happened, or is about to happen. In other words the referee must have an angled view on play. There are three basic types of angle.

External - where the referee is outside or to the left of play. From this position the referee can see through the point of contact and will have the majority of players in view and have play between themselves and their assistants



Internal - where the referee is inside the play, that is, on the right side of play. In this case many of the players are not in the referees view and the play is not between the referee and the assistant referee.

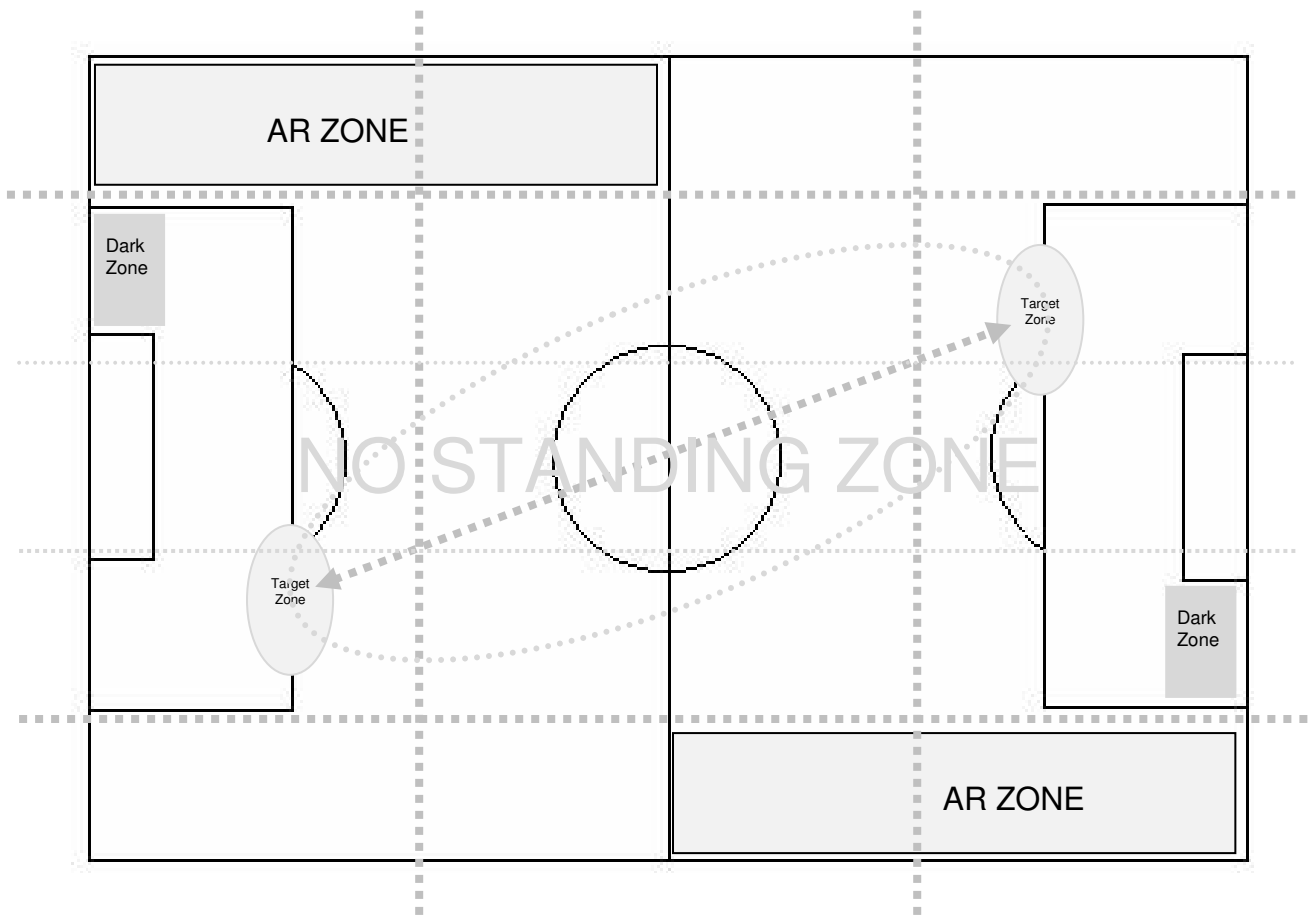
RELATIONSHIP TO THE BALL

The second component of good positioning is to try and keep the ball between the referee and assistant referee. The working relationship between the three officials encourages the assistants to take responsibility for their zone of play. The referee therefore, should be positioned to maximise this interaction.

CLOSE





Once the referee can see through the point of contact there is great value in being close to play. 'Close' should be interpreted as being between 10 to 15 metres from the ball. This increases the ability to 'sell the decision'.

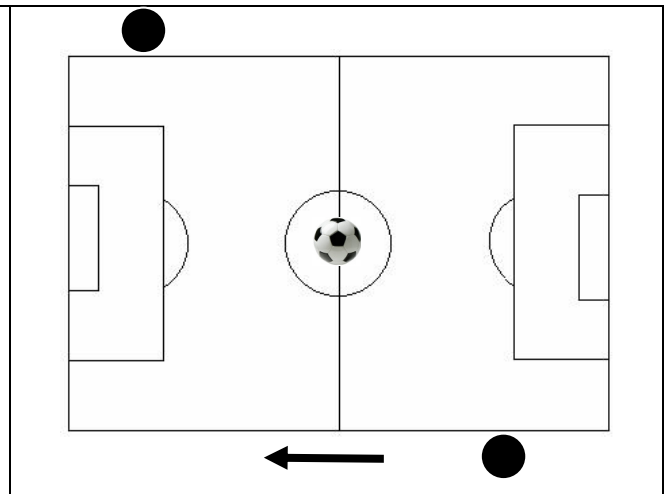
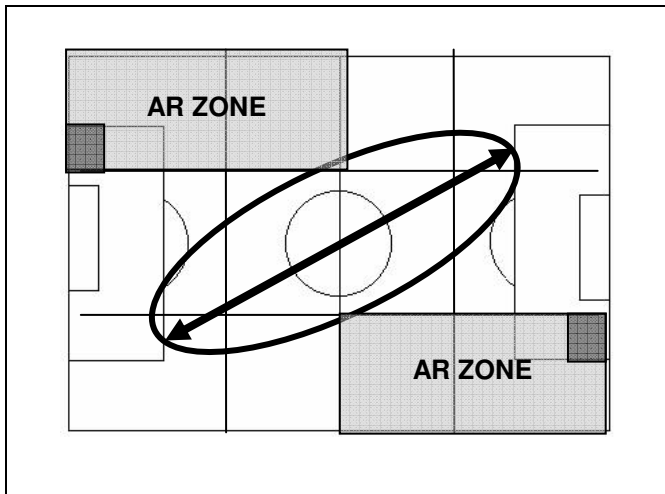
Professional Perspective



Set Play Positioning Test

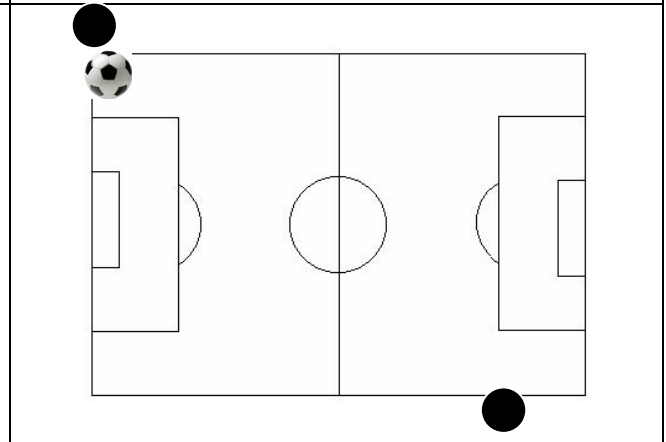
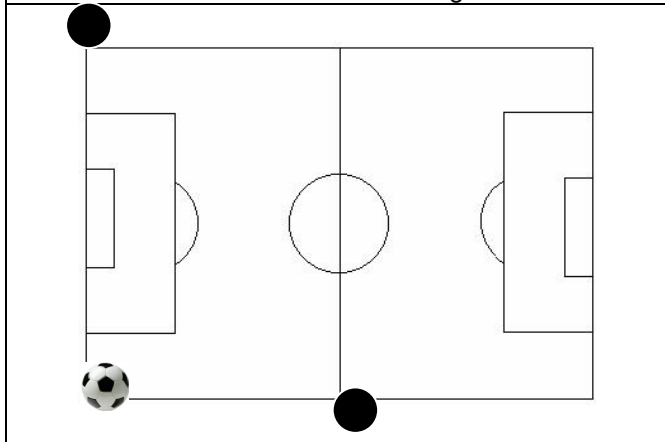
Mark on the page where you would stand at the following set plays?

KEY					
Referee	Assistant Referee	Attacker	Defender	Ball	Direction
		A	D		



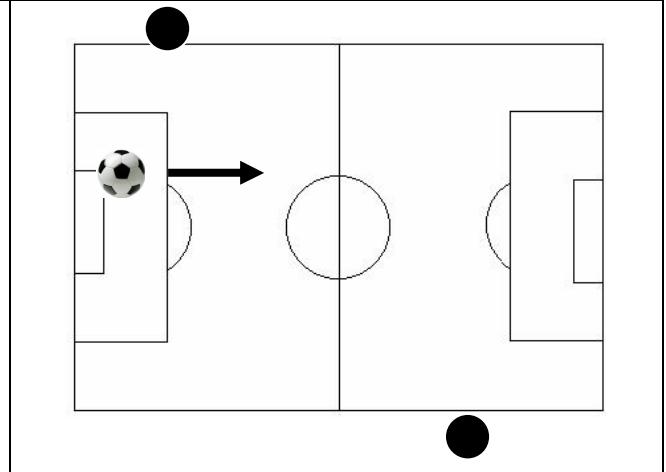
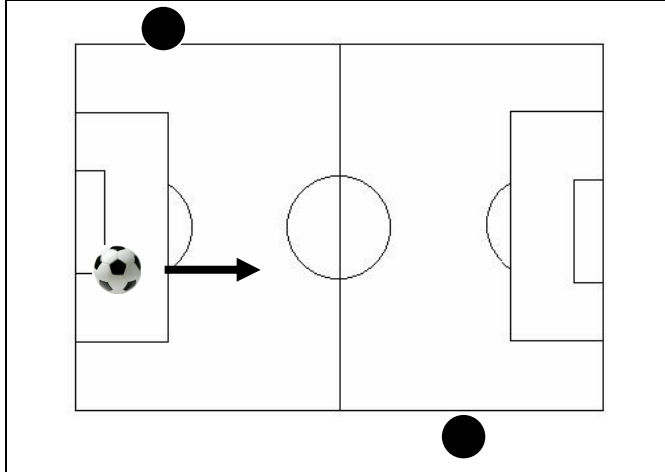
The Art of Positioning

Where would you stand at the Kick Off?



Where would you stand at a Corner Kick near side?

Where would you stand at a Corner Kick far side?

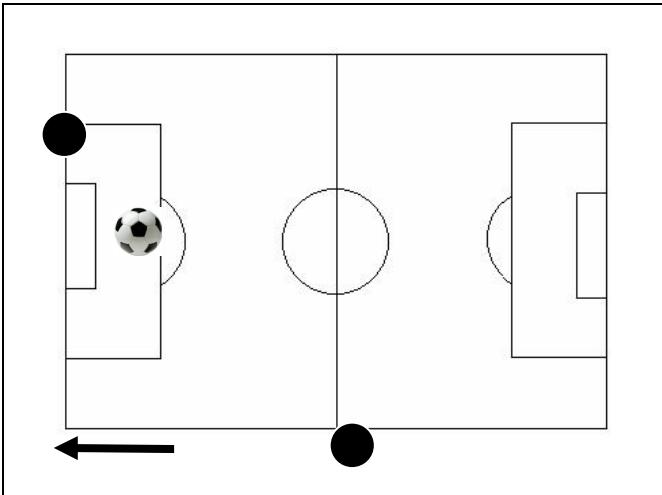


Where would you stand at a Goal Kick near side?

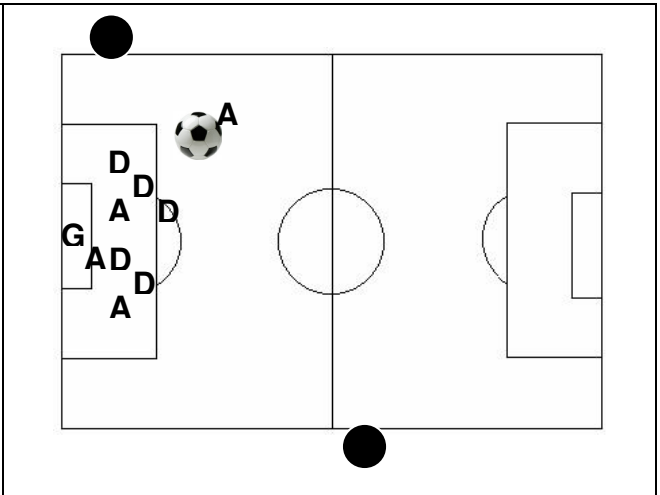
Where would you stand at a Goal Kick far side?

Set Play Positioning Test

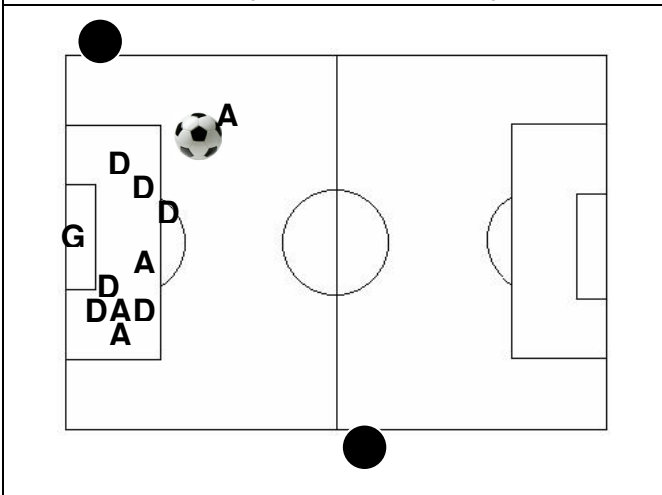
Mark on the page where you would stand at the following set plays?



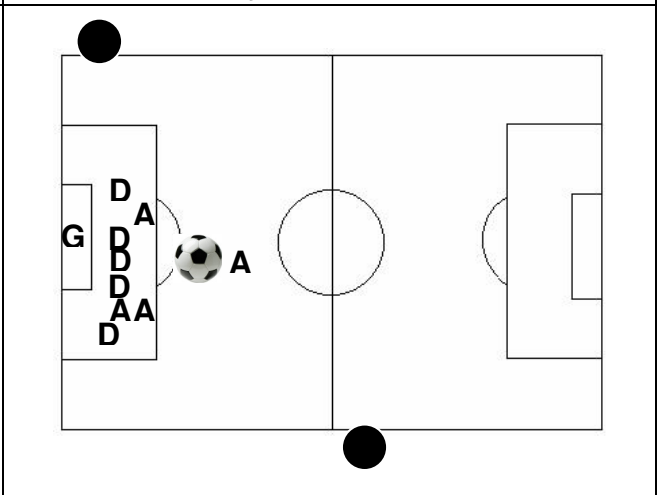
Where would you stand at a Penalty Kick?



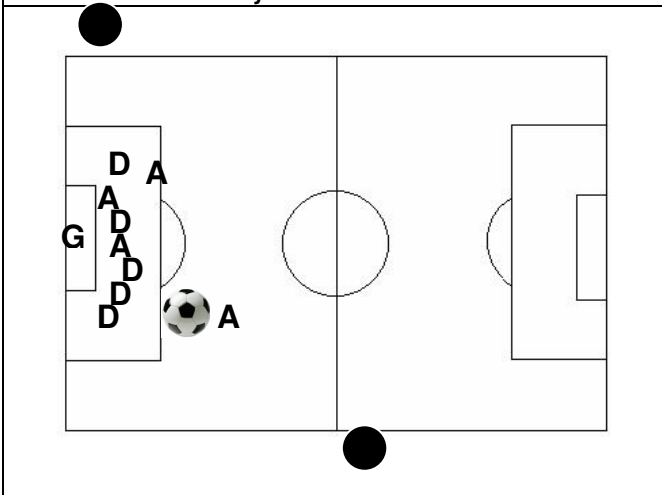
Where would you stand at this Free Kick?



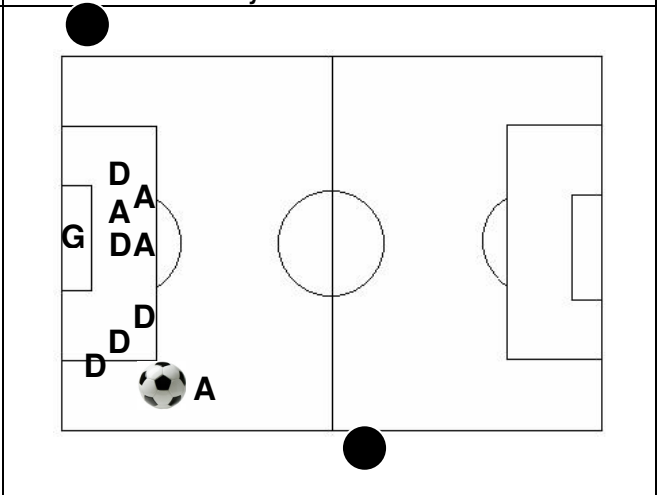
Where would you stand at this Free Kick?



Where would you stand at this Free Kick?



Where would you stand at this Free Kick?



Where would you stand at this Free Kick?